

Neptune **Medical/Professional Office Space** For Lease



**ADDRESS:** 2040 Sixth Ave, Neptune, New Jersey

**DESCRIPTION:** 3,000 (+-) square feet of medical office space available for lease.

Located one block from Jersey Shore Medical Center and the soon to be completed HOPE Tower.

Space offers a waiting area, reception, four offices, two treatment rooms with plumbing, two separate entrances, three lavatories, and plenty of space for filing and storage.

50 + Parking spaces

Less than one mile from the Garden State Parkway and Route 18.

**ZONING:** HC – Highway Commercial.

**RENT:** \$16 per square foot modified gross, + utilities.

This information is provided for informal discussion purposes only and is subject to error, modification and withdrawal without notice. All information should be independently confirmed.

**EXCLUSIVELY PRESENTED BY :**

**CHARLES J. FRANK**

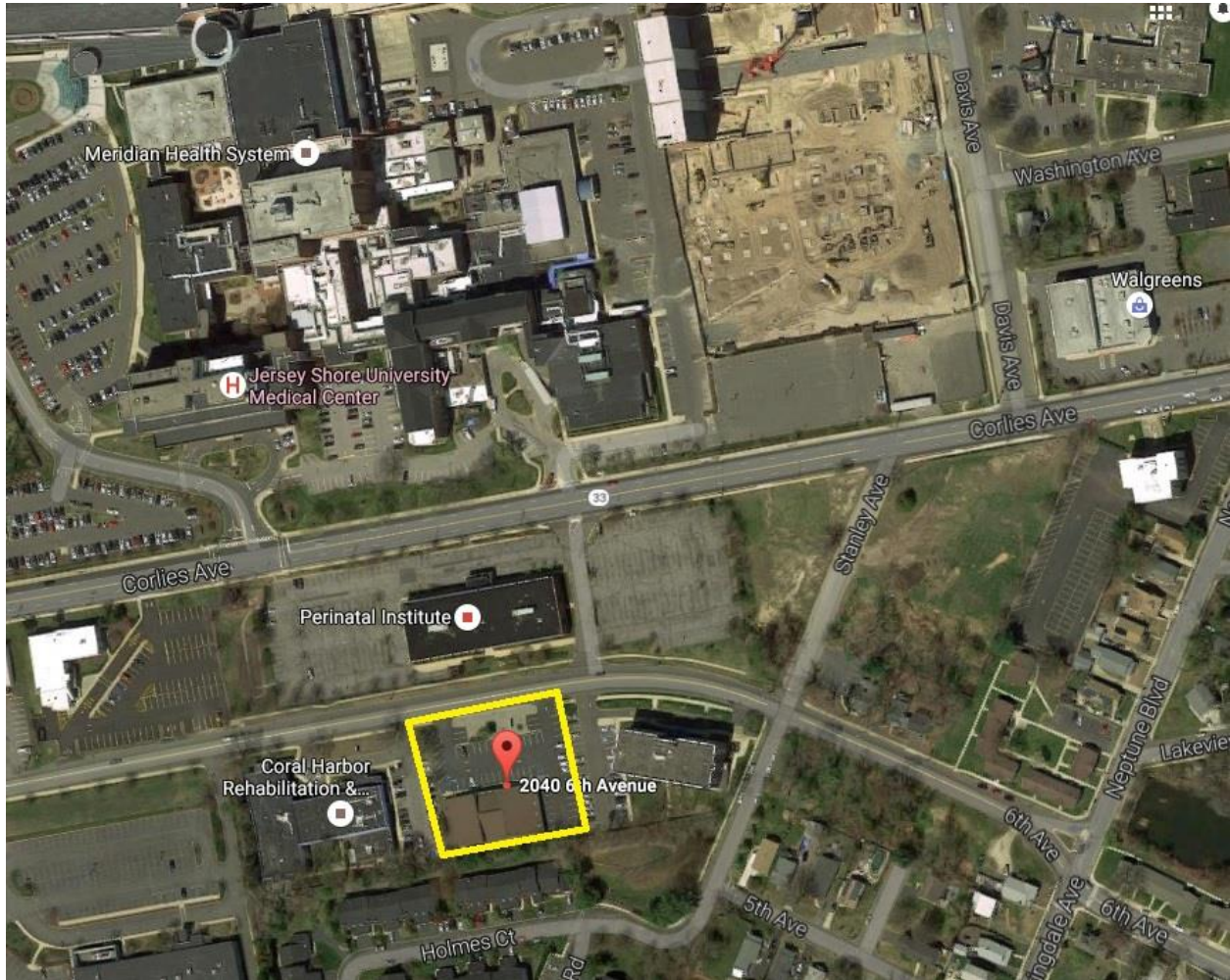
LICENSED REAL ESTATE SALESPERSON

BROTHERS COMMERCIAL BROKERAGE, INC.

227 E BERGEN PLACE, SUITE 3 • RED BANK, NEW JERSEY 07701 • 732-747-5575

[charles@thesavvybroker.com](mailto:charles@thesavvybroker.com)

# Neptune Medical/Professional Office Space For Lease



This information is provided for informal discussion purposes only and is subject to error, modification and withdrawal without notice. All information should be independently confirmed.

**EXCLUSIVELY PRESENTED BY:**  
**CHARLES J. FRANK**  
LICENSED REAL ESTATE SALESPERSON  
BROTHERS COMMERCIAL BROKERAGE, INC.  
227 E BERGEN PLACE, SUITE 3 • RED BANK, NEW JERSEY 07701 • 732-747-5575  
charles@thesavvybroker.com